



EDUARD LOCOTA
DESIGN & SCULPTURE STUDIO

MATERIALITY



INTRODUCTION

FROM THE OLDEST OF TIMES, OUR SPECIES HAS EXPERIENCED A STRONG SYMBIOSIS WITH MATTER. HUMANS HAVE LEARNED TO MODEL MATTER, TURNED IT INTO TOOLS, AND THEN USED IT TO CREATE OBJECTS. THE MAN OF THE 21ST CENTURY HAS SHAPED THE ANTHROPOCENE ERA TO HIS LIKING; AND PLASTICIZED IT TO HIS OWN MIRROR.

THE PROJECT CALLED *MATERIALITY*, IS CENTERED AROUND THE LAST GEOLOGICAL ERA, POPULARLY KNOWN AS THE PLASTIC AGE. AN ERA IN WHICH HUMAN IMPACT IS THE DOMINANT FORCE ON THE EARTH'S NATURAL MATERIALS.

DESCRIPTION

"I LEFT ON THE SURFACE OF THE OBJECT THE IMPRINTS OF MY OWN FINGERS, OF MY HANDS, AS WELL AS THE STRIKES AND MARKS LEFT BY THE ACTUAL TOOLS USED TO SHAPE THE WORK. LATER ON, I TOOK MOLDS OF MY HANDS, FINGERS AND OF THE TOOLS THAT WERE ACTUALLY USED IN THE MAKING OF THIS UNIQUE PIECE, AND DUPLICATED THEM IN COLD CAST BRONZE TO COMPLETE THE ARTISTIC STATEMENT."

FOR THIS SET OF WORKS, THE SYNTHETIC MATERIALS WERE CHOSEN RATIONALLY IN ORDER TO EXPLAIN BOTH THE PHYSICAL AND CONCEPTUAL MATERIALITY OF THE THEME. ALTHOUGH, THE EXACT OPPOSITE OF OUR CASE, THE COMMON PERCEPTION OF ANY SYNTHETIC MATERIAL IS USUALLY DISPOSABLE, MASS-PRODUCES AND LOW-GRADE. THIS GIVES BIRTH TO A DISCUSSION ABOUT THE ETHICAL VALUE OF SYNTHETIC MATERIALS AND MAN'S ABILITY TO PERCEIVE IT FROM A CULTURAL PERSPECTIVE.

WE DON'T THROW GOLD ON THE STREETS LIKE GARBAGE, BECAUSE WE TREASURE IT CULTURALLY. IN A BATTLE TO OVERPOWER OUR PRECONCEIVED IDEAS ABOUT THE VALUE OF MATERIALS, PRETENTIOUS MATERIALS DON'T MAKE OBJECTS MORE VALUABLE.

THE STORY OF THE TRANSFORMATION OF MATTER INTO AN OBJECT, ABOUT THE TRANSFORMATION OF THE OBJECT INTO A GOOD, ABOUT THE MONETIZATION OF THE GOOD.



MATERIALITY –SIDE TABLE & SCULPTURE

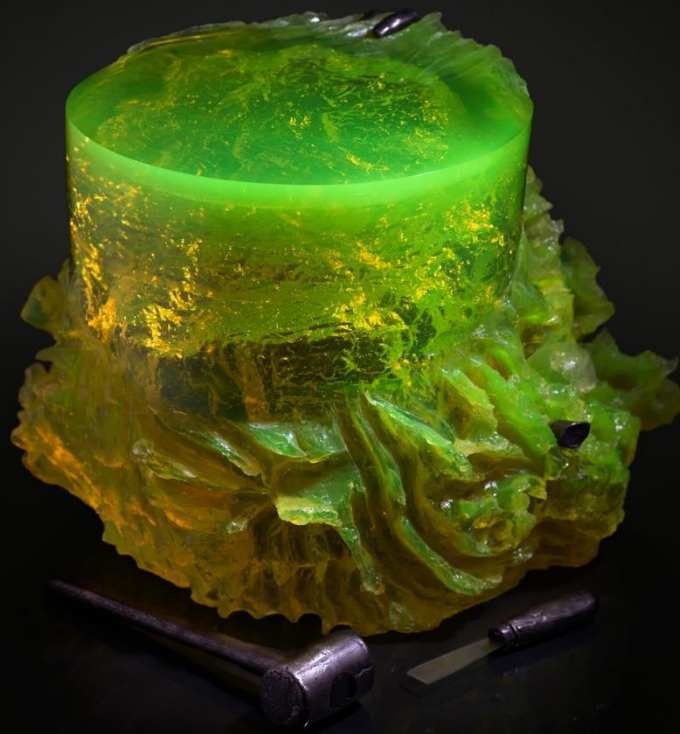
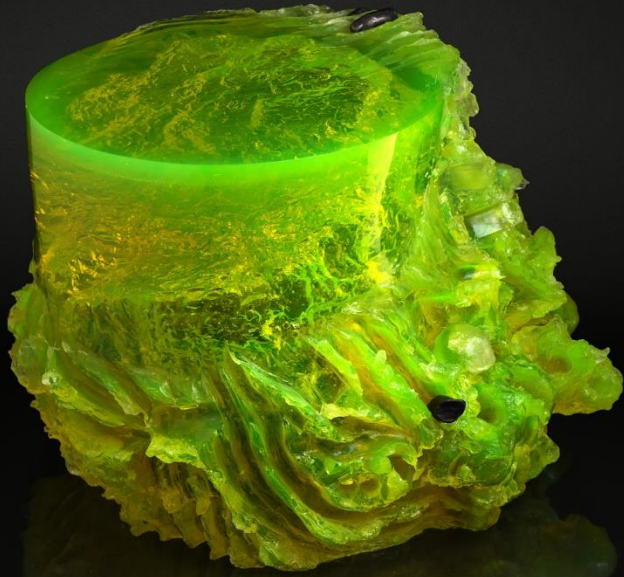
ACRYLIC GLASS, PIGMENTS, COLD CAST BRONZE
LIMITED EDITION OF 12 + 4 AP

L 62 CM / W 55 CM / H 44CM

COLOR VARIATIONS: NEON YELLOW, CANDY PINK, PURPLE RED, CHERRY RED, EARTH BROWN, BLUE TURQUOISE, SMOKE BLACK

HAND MADE BY THE ARTIST, USING TRADITIONAL AND NOVEL TECHNIQUES USED FOR CASTING METAL.
ACCOMPANIED BY A CERTIFICATE OF AUTHENTICITY SIGNED AND DATED BY THE ARTIST.







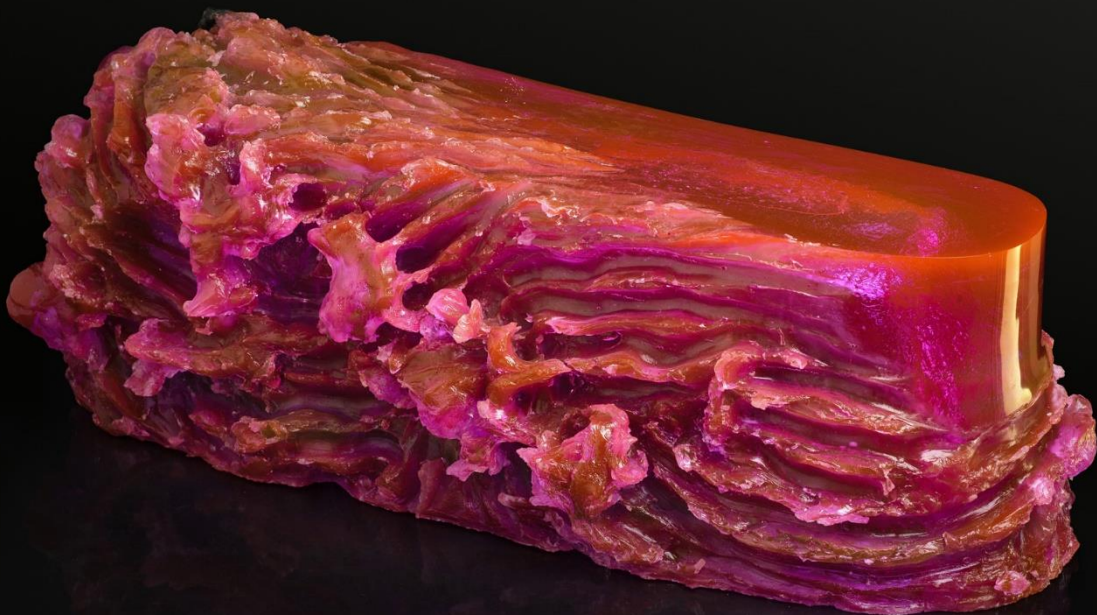
MATERIALITY –BENCH & SCULPTURE

ACRYLIC GLASS, PIGMENTS, COLD CAST BRONZE
LIMITED EDITION OF 12 + 4 AP

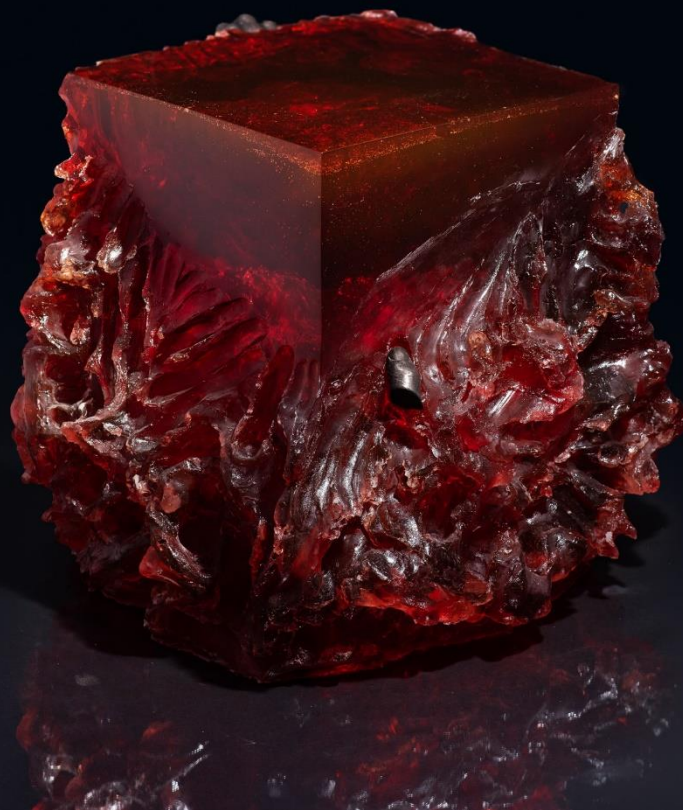
SCULPTURE SIZE: L 82 CM / W 32 CM / H 29CM
BENCH SIZE: L 164 CM / W 64 CM / H 38CM

COLOR VARIATIONS: PURPLE RED, NEON YELLOW, CANDY PINK, CHERRY RED, EARTH BROWN, BLUE TURQUOISE, SMOKE BLACK.

HAND MADE BY THE ARTIST, USING TRADITIONAL AND NOVEL TECHNIQUES USED FOR CASTING METAL.
ACCOMPANIED BY A CERTIFICATE OF AUTHENTICITY SIGNED AND DATED BY THE ARTIST.







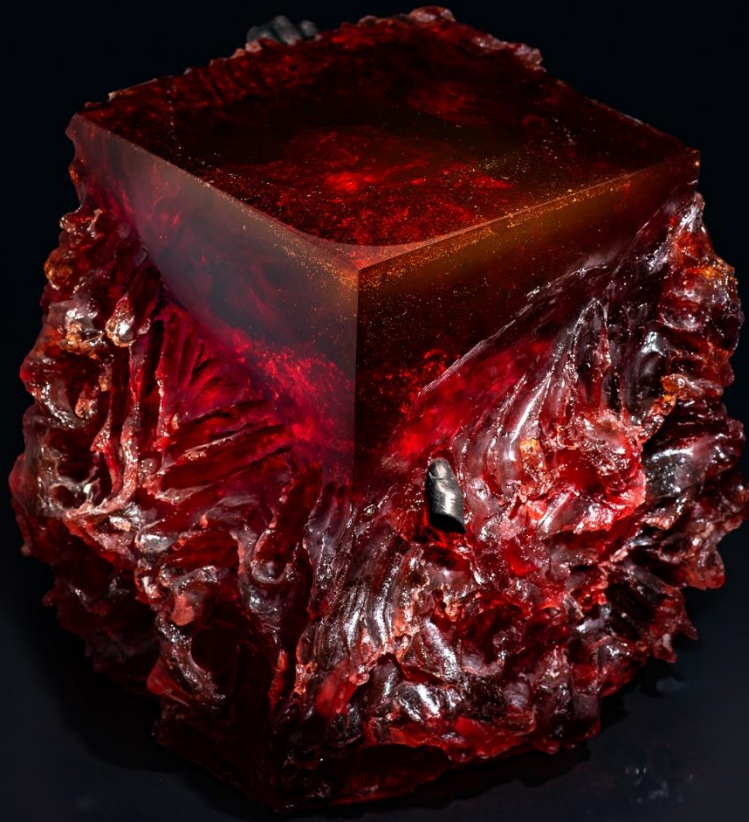
MATERIALITY –SIDE TABLE & STOOL

ACRYLIC GLASS, PIGMENTS, COLD CAST BRONZE
LIMITED EDITION OF 12 + 4 AP

DIMENSIONS: L 47 CM / W 46 CM / H 42CM

COLOR VARIATIONS: CHERRY RED, NEON YELLOW, CANDY PINK, PURPLE RED, EARTH BROWN, BLUE TURQUOISE, SMOKE BLACK.

HAND MADE BY THE ARTIST, USING TRADITIONAL AND NOVEL TECHNIQUES USED FOR CASTING METAL.
ACCOMPANIED BY A CERTIFICATE OF AUTHENTICITY SIGNED AND DATED BY THE ARTIST.







MATERIALITY – LOW TABLE

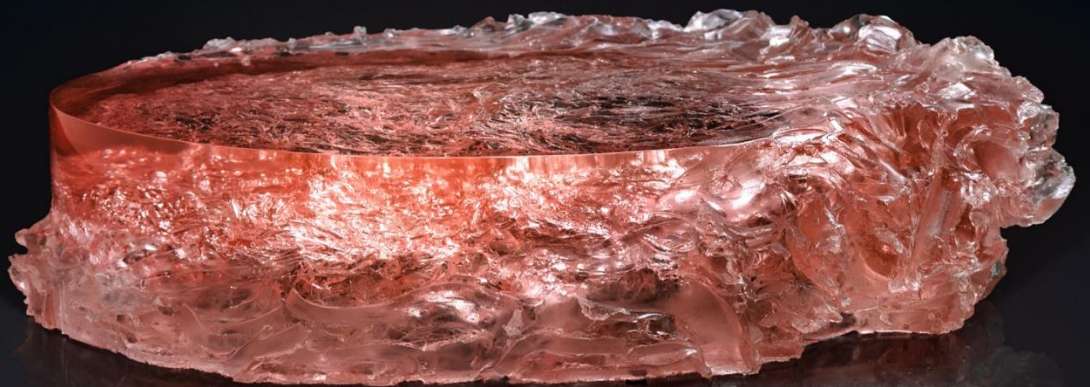
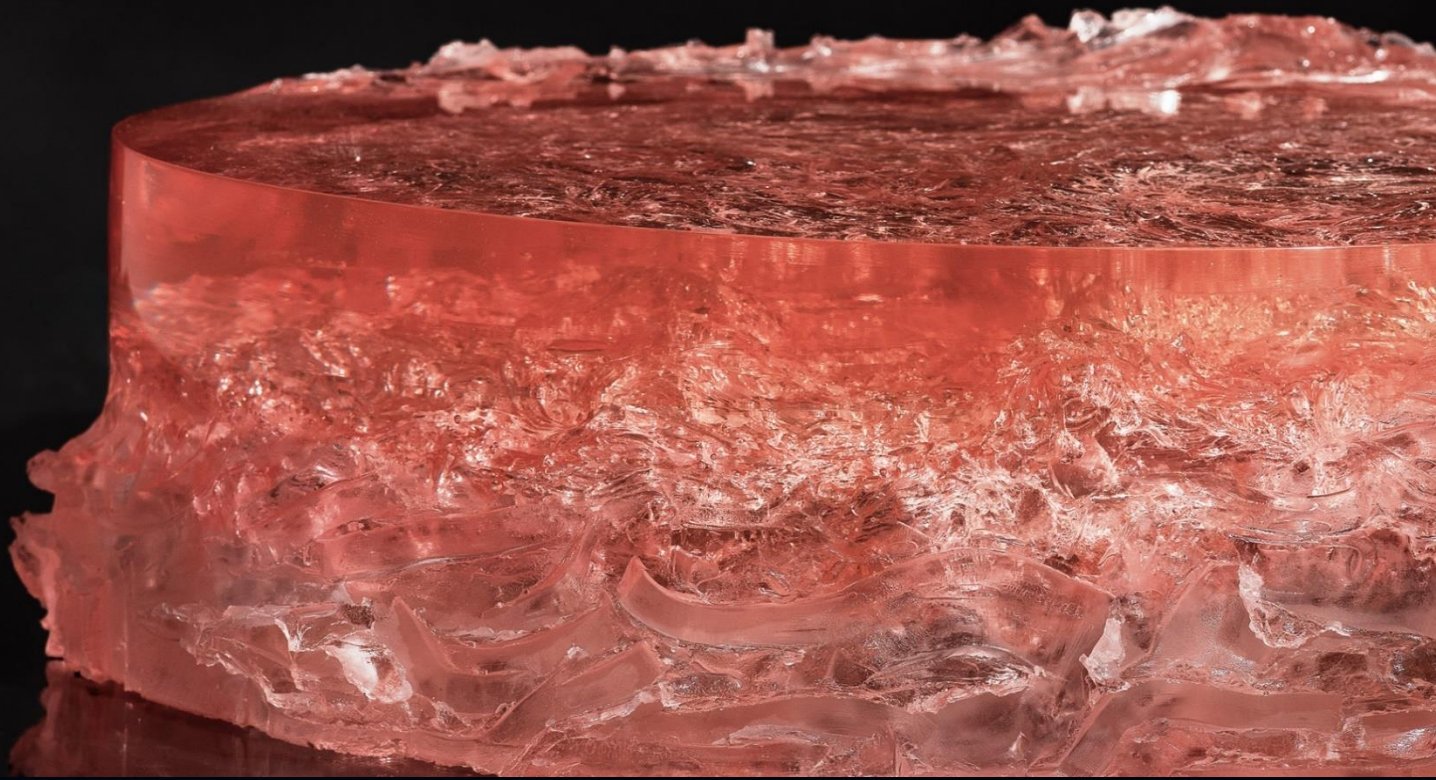
ACRYLIC GLASS, PIGMENTS
LIMITED EDITION OF 12 + 4 AP

DIMENSIONS: L 156 CM / W 95 CM / H 39CM

COLOR VARIATIONS: CANDY PINK, NEON YELLOW, PURPLE RED, CHERRY RED, EARTH BROWN, BLUE TURQUOISE, SMOKE BLACK.

HAND MADE BY THE ARTIST, USING TRADITIONAL AND NOVEL TECHNIQUES USED FOR CASTING METAL.
ACCOMPANIED BY A CERTIFICATE OF AUTHENTICITY SIGNED AND DATED BY THE ARTIST.



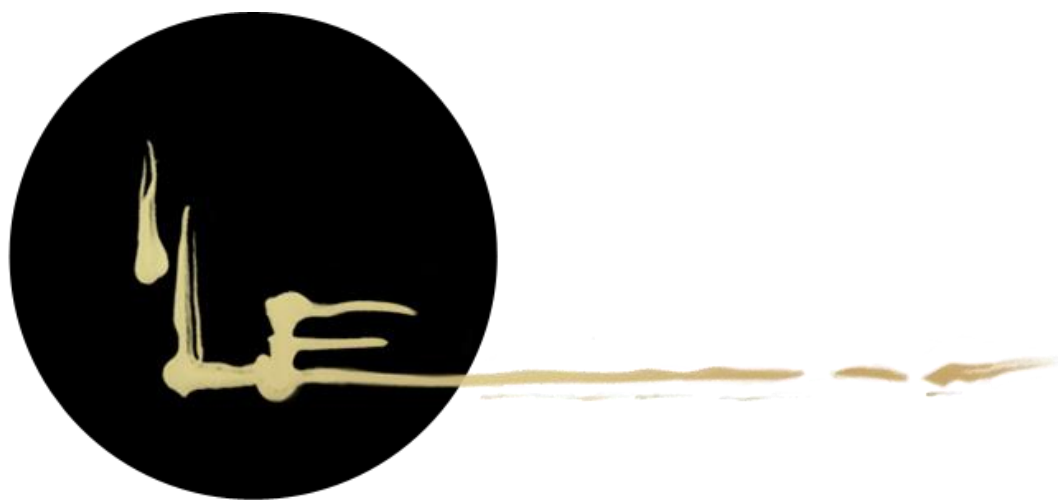






WWW.EDUARDLOCOTA.COM
OFFICE@EDUARDLOCOTA.COM
TIMISOARA, ROMANIA

DESIGNER & SCULPTOR: EDUARD
LOCOTA



EDUARD LOCOTA
SCULPTURE & DESIGN

VERSION I, 2021

COPYRIGHT @ EDUARD LOCOTA DESIGN SRL
2021 - ALL RIGHTS RESERVED